



CURRENTS > ON BOARD > *Tiara Yachts C49 Coupe*



50'3"
LENGTH
OVERALL
—
15'4"
MAXIMUM
BEAM



CONNECTIVITY

When opened, the C49's sliding glass pocket doors provide a seamless link between the L-shaped outdoor seating, the galley and the salon.

SOMETHING DIFFERENT

The Tiara Yachts C49 Coupe is chock-full of new design and decor concepts.

BY KEVIN FALVEY

IT'S COMMON FOR boatbuilders to create a new model in a size and style that resides squarely between two popular yachts, cutting and pasting, as it were, with design features of each sistership. Tiara Yachts' C49 Coupe is different. It falls between the C44 and C53 sizewise and pricewise, but it has a host of unique features. ¶ From the C49's swim platform, there is single-point cockpit access. The solo entry leaves space in the cockpit for an L-shaped settee — a pebbled, leatherlike luxury the boat's fleet mates lack. With a varnished table set

atop a chromed-stainless-steel removable pedestal, the settee is as well-suited for morning coffee on the hook as it is for crew to socialize while the yacht's wake stretches back to the horizon. ¶ Entering the single-level salon through a slider, I found the decor striking. Gray is the new beige, and there are a variety of surfaces in a variety of textures, from wood grain to slick, enhancing one another. The cherry sole and trim offer a touch of warmth and a nautical feel. ¶ Looking for teak on teak, with teak trim? You won't find it aboard the C49. You also won't find the C49's



BRIGHT IDEA

The C49 has a new type of LED high hat light. Instead of creating the kind of hot spots you find in hotels and other public places, these LEDs provide more residential-like illumination.

With nearly 360 degrees of glass and a sunroof, the C49 brings the outside inside.

COURTESY TIARA YACHTS



CURRENTS > ON BOARD > *Tiara Yachts C49 Coupe*

HOW'D THEY DO THAT?

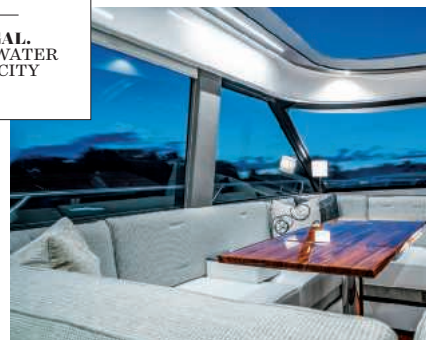
To allow so much glass with unfettered visibility from the salon,

Tiara's engineers had to think about the structural loads on the C49's cabin top. The engineered structure within the C-pillars that connect to the windshield frame shares loads with the after bulkhead — a setup strong enough to support a flybridge.

double-wide helm seat aboard other C-series coupes. During my trick at the helm, I found that seat to be a comfortable addition that allows the captain and mate to enjoy the journey side by side. The helm module — housing dual multifunction displays, switches and more — seemed to float. It had Tiara's hallmark "pencil holder" design, allowing the skipper to keep sundry items secure and at hand. ¶ Accommodations for as many as six are belowdecks. There are two heads, with one in the en suite, full-beam master stateroom. With hullside windows providing light, this space feels big — and it is. The use of Volvo Penta IPS power plants allows for 3 feet more cabin space than a straight-shaft diesel inboard would, according to Tiara's design team. ¶ The twin 600 hp IPS800s powering the C49

**500 GAL.
FUEL
CAPACITY**

**135 GAL.
FRESHWATER
CAPACITY**



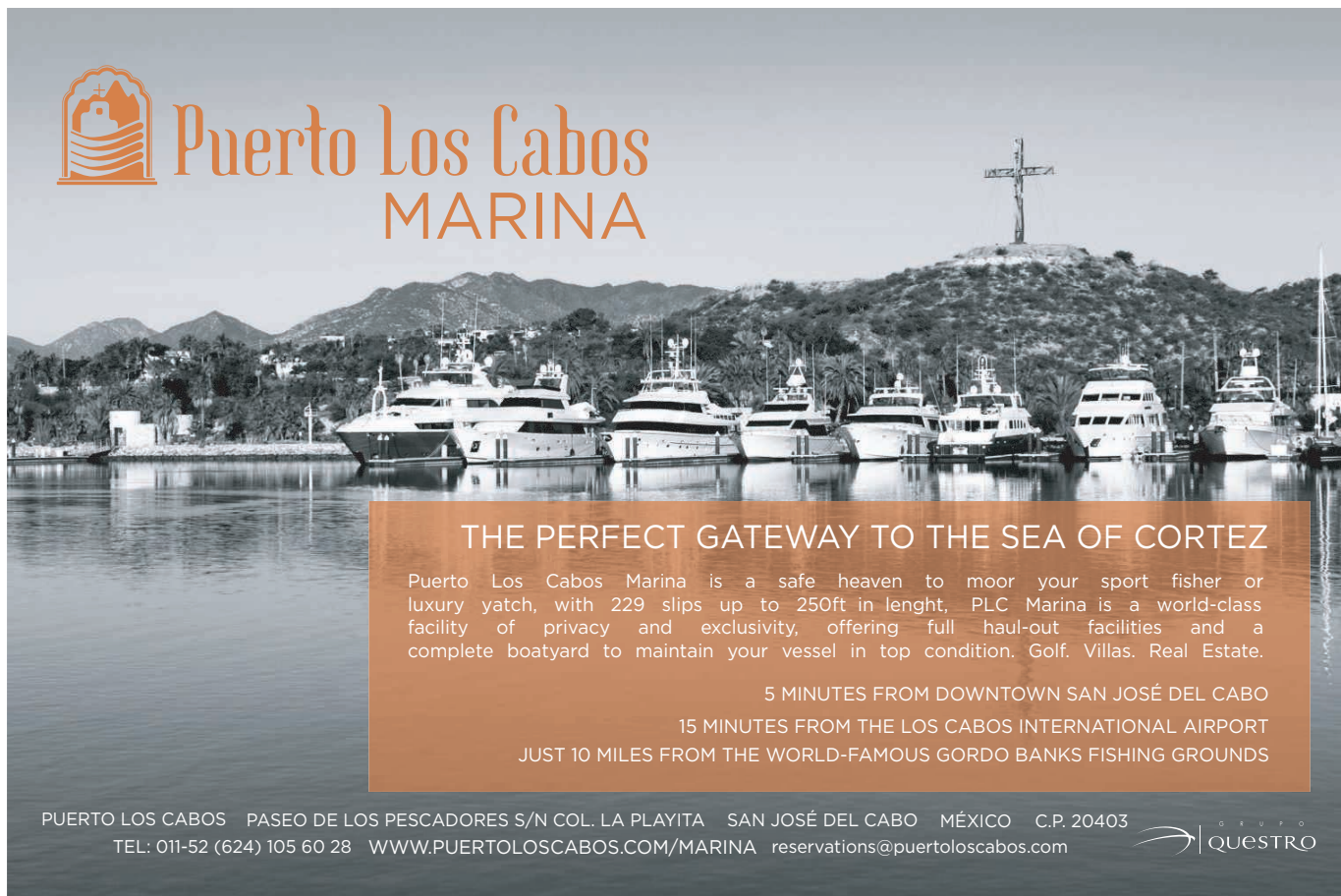
delivered 31 knots at wide-open throttle, and cruised comfortably at 26 knots, burning 52 gph. The yacht's fuel economy never fell below 0.5 mpg anywhere in the cruising range. ¶ Tiara has evolved with the C49, a yacht that will be a nice surprise even to longtime fans of the brand. ¶

Take the next step: tiaryachts.com

COURTESY TIARA YACHTS



Puerto Los Cabos MARINA



THE PERFECT GATEWAY TO THE SEA OF CORTEZ

Puerto Los Cabos Marina is a safe heaven to moor your sport fisher or luxury yacht, with 229 slips up to 250ft in length. PLC Marina is a world-class facility of privacy and exclusivity, offering full haul-out facilities and a complete boatyard to maintain your vessel in top condition. Golf. Villas. Real Estate.

5 MINUTES FROM DOWNTOWN SAN JOSÉ DEL CABO

15 MINUTES FROM THE LOS CABOS INTERNATIONAL AIRPORT

JUST 10 MILES FROM THE WORLD-FAMOUS GORDO BANKS FISHING GROUNDS

PUERTO LOS CABOS PASEO DE LOS PESCADORES S/N COL. LA PLAYITA SAN JOSÉ DEL CABO MÉXICO C.P. 20403
TEL: 011-52 (624) 105 60 28 WWW.PUERTOLOSCABOS.COM/MARINA reservations@puertoloscabos.com

